

**3**

**Ninth Avenue  
Meatpacking District, NYC**

**EXCEPTIONAL CORNER RETAIL**

**1,780 sf GROUND LEVEL  
1,375 sf LOWER LEVEL**



**60' Of Frontage**



# 3

## **Ninth Avenue @ Gansevoort Street Meatpacking District, NYC**

**SHORT-TERM  
"POP-UP"  
STORE CONSIDERED**

- **PROMINENT CORNER MEATPACKING RETAIL OPPORTUNITY**
- **IDEALLY SITUATED AT THE CROSSROADS OF GANSEVOORT PLAZA**
- **DIRECTLY OPPOSITE THE GANSEVOORT ROW DEVELOPMENT, THE NEW RESTORATION HARDWARE FLAGSHIP, AND NEXT TO THE FIRST EVER RH BOUTIQUE HOTEL**
- **PEDESTRIAN TRAFFIC: STEPS TO THE NEW WHITNEY MUSEUM & HIGH LINE PARK**
- **PHENOMENAL PHYSICAL SPACE WITH ATTRACTIVE, MODERN RETAIL INSTALLATION**
- **12' CEILINGS**
- **FULL FINISHED BASEMENT FOR STORAGE AND BACK OF HOUSE OPERATIONS**
- **SURROUNDING ATTRACTIONS INCLUDE:**

**GANSEVOORT ROW**

**WHITNEY MUSEUM OF ART**

**GANSEVOORT HOTEL**

**STANDARD HOTEL**

**SOHO HOUSE**

**HIGH LINE**

**RESTORATION HARDWARE FLAGSHIP**

**RH HOTEL**

**CATCH**

**SEPHORA**

**THEORY**

**ALISA AMSTERDAM  
ALISA@LW12REALTY.COM  
646.483.8392**



# 3

## Ninth Avenue @ Gansevoort Street Meatpacking District, NYC



**16TH STREET**  
 THE CALEDONIA, HIGHLINE BALLROOM, WESTERN BEEF, ENTRANCE TO THE HIGHLINE, 16TH STREET, BUDDAKAN, MORIMOTO, CHELSEA MARKET, CHELSEA MARKET, ANTHROPOLOGIE

**15TH STREET**  
 PHILLIPS DE PURY & COMPANY, MILK, BLUE BOTTLE, MASSIMO BIZZOCCHI, ALICE & OLIVIA, JOE, LA PERLA, BOUTIQUE HOTEL DEVELOPMENT, UCB, MANDIN, MONARCH, NEW DEVELOPMENT, T-MOBILE, REEL PEOPLE, LE PAIN QUOTIDIEN, L'OCCITANE, SOLSTICE, THE DIVER, SCARPETTA, GANSEVOORT MARKET, COLLECTIVE

**14TH STREET**  
 ENTRANCE TO THE HIGHLINE, 14TH STREET, HIGHLINE BUILDING, MIPICA, D&G, SCOP STREET, ASICS, Z-SPOKE, GROUND ZERO MUSEUM, PAIGE PREMIUM DENIM, BOND # 9, SCOOP, HOGS & HEFFERS, WASHINGTON STREET, VAL BELLÀ, ALL SAINTS, BB., CARLOS MELLE, ARIAN'S, BASILIGHT, SIBO HOUSE, VITRA, NINTH AVENUE, DOG CANNIS, COFFEE BEAN & TEA LEAF, PINKBERRY, PAPER SOURCE, SUPER RUNNER SHOP, RUSBON STREET, PAPER SOURCE, BILL'S BAR & BURGER, DRY BAR, PAPER SOURCE

**13TH STREET**  
 THE STANDARD HOTEL, STANDARD GRILL, BRASS MONKEY, STANDARD BIERSGARTEN, SAMSUNG, SUGAR FACTORY, HIGHLINE, WONDERLAND, DOTTLE & DOTYLE, ANJA, ARNAUD FURNITURE, CATCH, SEPHORA, THE CHESTER, MARNI, BAGATELLE, CALYPSO, GANSEVOORT STREET

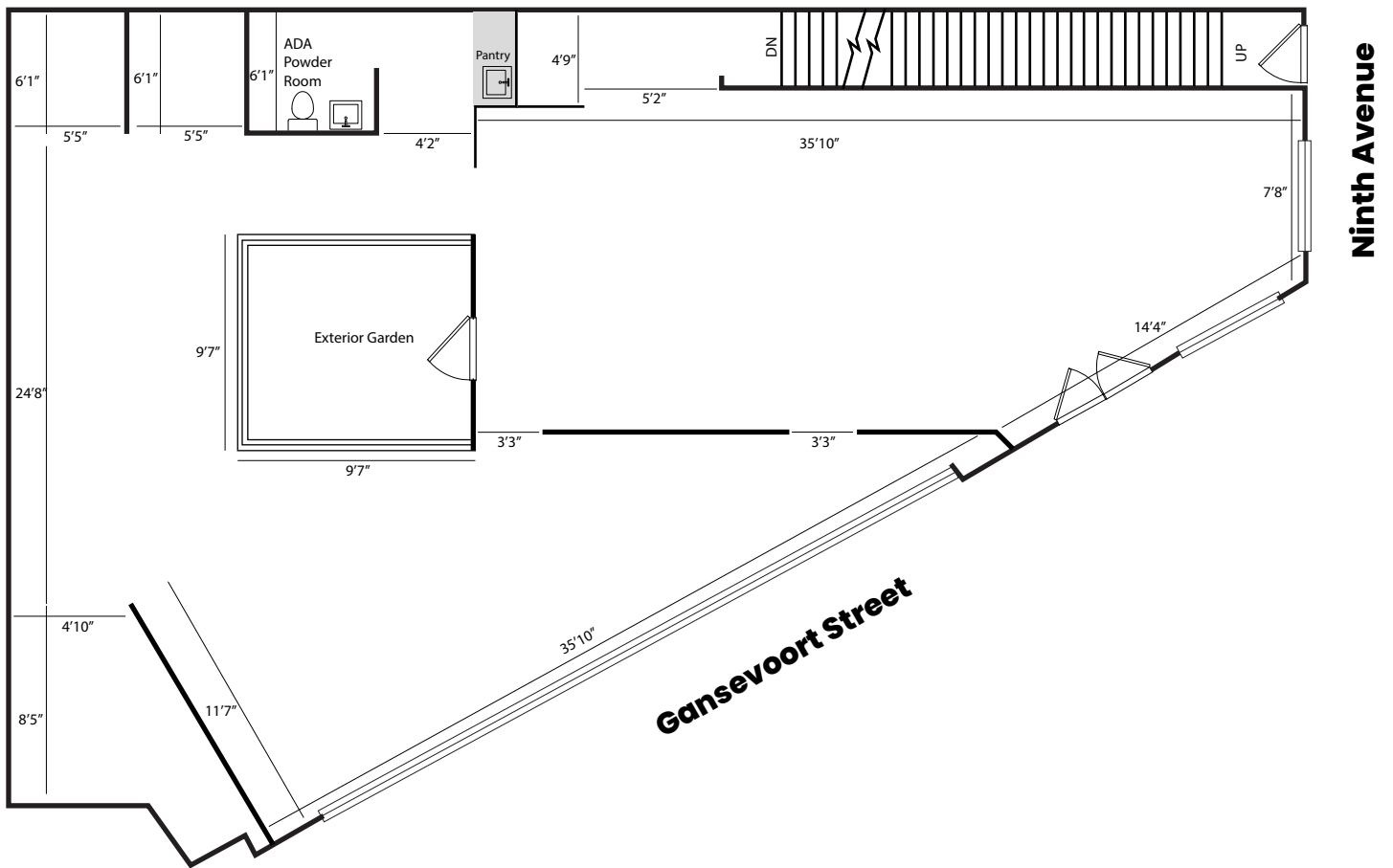
**LITTLE WEST 12TH STREET**  
 VINCE, ZADIG & VOLTAIRE, LIMB LAND, ICE BREAKER, HELMUT LANG, WABBY PARKER, BOBBY'S, WHITNEY MUSEUM OF ART, ENTRANCE TO THE HIGHLINE, JAY GOOPREY, CHRISTIAN LOUBAULT, HANRO, KILIAN, SHERATON, PT. BANS, REBECCA TAYLOR, FATTY DRAIN, TRACY REESE DOWNTOWN, FREDERICK'S REESE DOWNTOWN, TOWNMARK, B&E BODIES

**GANSEVOORT STREET**  
 REBECCA TAYLOR, FREDERICK'S REESE DOWNTOWN, FREDERICK'S REESE DOWNTOWN

**HORATIO STREET**  
 OWEN, M. KORANOWSKI, PARFUMES DE MARLY, KAVA



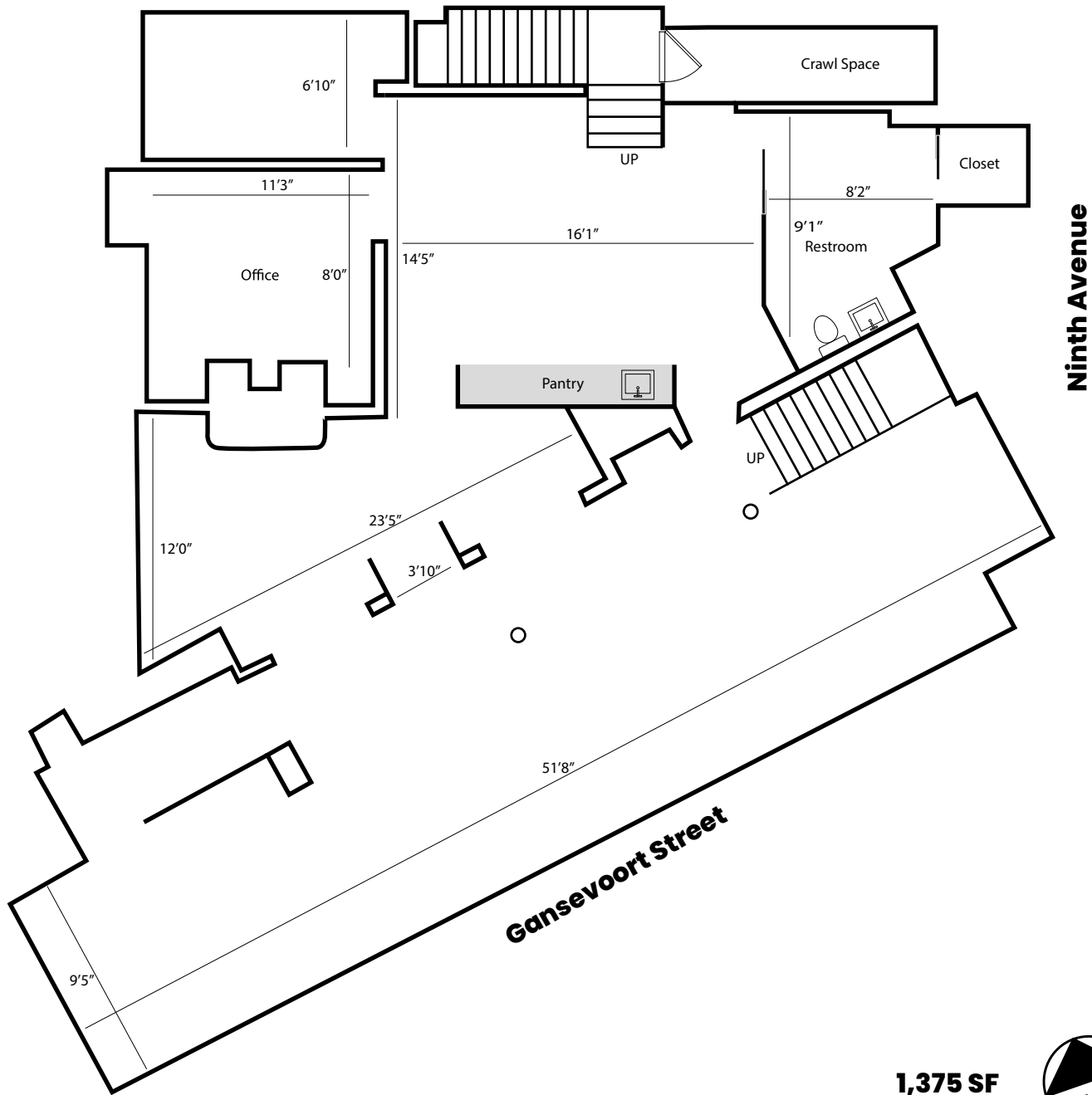
# Ground Level



1,780 SF



# Lower Level



1,375 SF

